



Muccon
The Power to Control Powders

Valve Type	Norm Bore	All dimensions in mm / Weights given for All unit in kgs																				Nett Weight	
		A	B	C	D	E	F	G	H	J	K	L	M	N	P	R	S	T	U	W	X	Y	Z
ADP06	150	147	46	75	55	40	165	180	367	196	160	412	10	8	3	M8	15	12	3	9	203	228	142
ADP08	200	198	46	100	55	40	165	205	385	196	160	430	10	8	3	M8	15	12	3	9	254	280	193
ADP12	300	300	55	150	60	50	165	267	467	240	160	510	10	8	4	M10	20	15	4	11	378	400	295

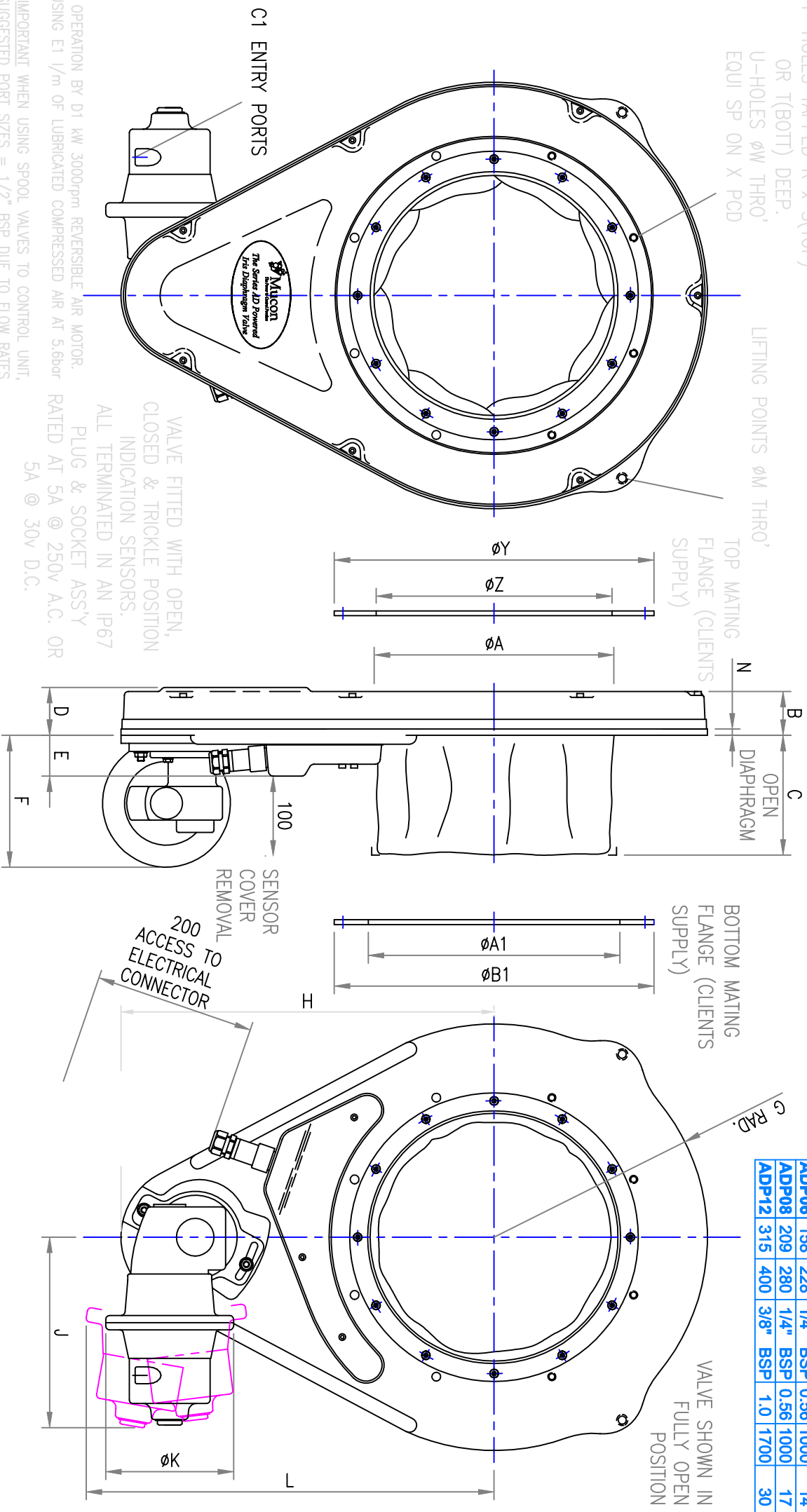
P-HOLES TAPPED R x S(TOP)
OR T(BOTT) DEEP.
U-HOLES ØM THRO'
EQUI SP ON X PCD

LIFTING POINTS ØM THRO'

TOP MATING FLANGE (CLIENTS SUPPLY)

BOTTOM MATING FLANGE (CLIENTS SUPPLY)

VALVE SHOWN IN FULLY OPEN POSITION



OPERATION BY D1 kW 3000rpm REVERSIBLE AIR MOTOR.
USING E1 1/m OF LUBRICATED COMPRESSED AIR AT 5.6bar
RATED AT 5A @ 250V A.C. OR 5A @ 30V D.C.

*IMPORTANT WHEN USING SPOOL VALVES TO CONTROL UNIT, SUGGESTED PORT SIZES = 1/2" BSP DUE TO FLOW RATES REQUIRED.

Series AD Air Motor Operated Iris Diaphragm Valve

Muccon Division, Kemutec Group, Springwood Way, Macclesfield, Cheshire, UK SK10 2ND, Tel: +44 (0)1625 412000, Fax: +44 (0)1625 412001

Although every effort is made to ensure this data is current, our products are subject to ongoing development and accordingly we reserve the right to change specifications and details without prior notice. Always request a certified drawing