

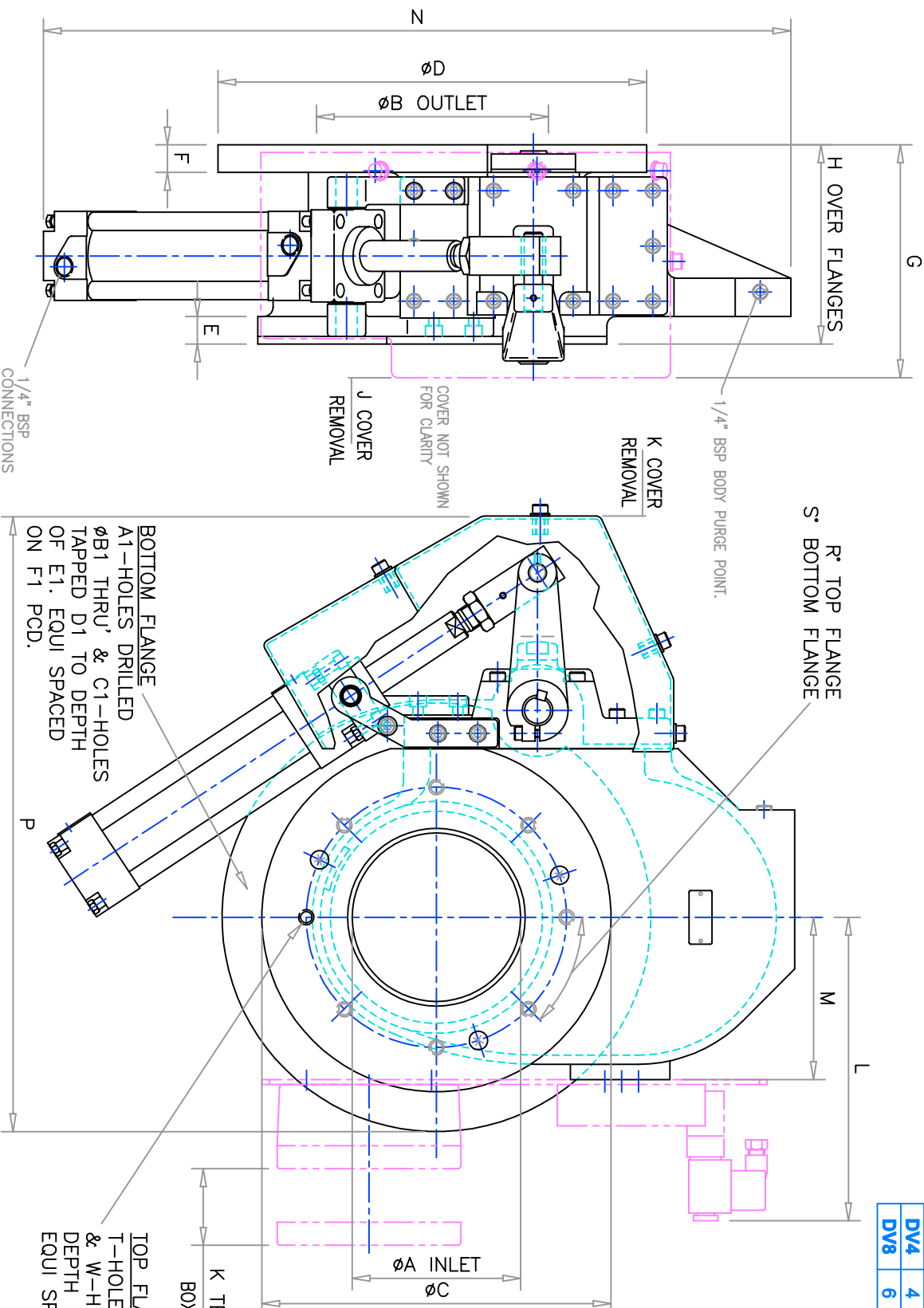


Muccon

The Power to Control Powders

Valve Type	Norm Bore	All dimensions in mm / Weights given in kgs																					
DV4	100	A 110	B 150	C 228	D 280	E 18	F 18	G 152	H 130	J 40	K 150	L 200	M 106	N 490	P 402	R 0	S 0	T 0	U -	W 8	X M10	Y 15	Z 170
DV8	200	A 200	B 250	C 335	D 400	E 23	F 18	G 190	H 145	J 40	K 150	L 277	M 172	N 744	P 532	R 22.5	S 20	T 4	U 14	W 4	X M12	Y 15	Z 295

Valve Type	A1	B1	C1	D1	E1	F1	ALL	CI	Nett Weight
DV4	4	M10	4	M10	15	225	17.5	31.5	38
DV8	6	14	6	M12	17	350	30	55	66



RECOMMENDED AIR SUPPLY
5.6bar TO 7.0bar OF
COMPRESSED AIR, FILTERED
& LUBRICATED OR
NON-LUBRICATED.

DRY AIR MUST BE USED
BELOW -1°C

LIMIT SWITCHES AND
SOLENOID CONTROL
PACKAGES AVAILABLE FOR
FULLY OPEN, CLOSED AND
TRICKLE OPERATION.

AIR CONSUMPTION @ 5.6bar
DV4 ~ 20 cc/s
DV8 ~ 100 cc/s
(Assuming continuous operation)

TOP FLANGE
T-HOLES DRILLED ϕU THRU'
& W-HOLES TAPPED X TO
DEPTH OF Y.
EQUI SPACED ON Z PCD.

K TERMINAL
BOX ACCESS

2nd Generation Disc Valve Pneumatic

Muccon Division, Kemutec Group, Springwood Way, Macclesfield, Cheshire, UK SK10 2ND, Tel: +44 (0)1625 412000, Fax: +44 (0)1625 412001